

Tee Time

JOURNAL OF THE INTERNATIONAL PHILATELIC GOLF SOCIETY

1

EDITOR _____ STUART R. MACKENZIE

9

DECK & HOME GOLF.



CONTENTS

EDITORIAL - Membership Register, New Issues, 1978 Open - St. Andrews.	26
GOLF ILLINOIS by Stuart R. MacKenzie	27
CAYMAN ISLANDS by Hamish Anderson	30
STATION MARKINGS by Cora B. Collins	32
The OPEN CHAMPIONSHIP HANDCANCELS Compiled by Stuart R. MacKenzie	33
GOLF STAMP CATALOGUE (continued)	34

8

MARCH N°3

8

PRESIDENT

Mrs CORA B. COLLINS
P.O. Box 2183,
Norfolk,
Virginia 23501
U.S.A.

SECRETARY

KEVIN J. HADLOCK
447 Skyline Drive
Orange
CT 06477
U.S.A.

TREASURER

DAVID C. HARMON
4 Whitaker Court
Williamsburg
Virginia 23185
U.S.A.

EDITOR

STUART R. MacKENZIE
'Caberfeidh'
Riverside
Poolewe IV22 2LA
Ross-shire SCOTLAND

NEW MEMBERS

- 119 Bandh, Olle, Drottninggatan 6,
Varberg, S-43200 SWEDEN
- 137 Cooper, John, P. O. Box 5010,
Auckland, NEW ZEALAND
- 125 Coulbourne, Joseph, 702 Prince Allen
Ct., Virginia Beach, VA 23454 USA
- 120 Geisler, John, 500 Wentworth Lane
Modesto, CA 95350 USA
- 133 Harvey, W.L., 29 Hawthorn Ave.
Lenzie, Glasgow G66 4RA SCOTLAND
- 124 Huason, Roger, 36 West St., Warwick
CV34 6AN, ENGLAND
- 134 Lien, Kenneth, 3710 NW 166th Dr.,
Beaverton, OR 97006 USA
- 123 Luzar, Victor T., 7109 Hopkins Rd.
Mentor, OH 44060 USA
- 122 Matson, Byron L., AmConGen (GAO),
APO New York, NY 09213 USA
- 130 Ohtake, Masayuki, 3-16-8 Higiriyama,
Kohnan-ward, Yokohama 233 JAPAN
- 131 Reed, Douglas, Lowengarth, St. Tudy,
Cornwall PL30 3NG UNITED KINGDOM
- 127 Reia, Frank, 35 Stonegate Dr.
Ancaster, Ontario L9G 3P3 CANADA
- 135 Robinson, Ron, 4521 Country Club
Boulevard, Little Rock, AK 72207 USA
- 126 Sandell, Goran, Hyregatan 4,
211 21 Malmö SWEDEN
- 128 Sidaway, Judith Margaret, 18A
Heaphy Place, Christchurch S
NEW ZEALAND
- 118 Schudrowitz, Mike, P.O. Box 2153,
Milwaukee, WI 53201-2153 USA
- 121 Taylor, Margaret, 6335 SW Barnes Rd.
Portland, OR 97225 USA
- 138 Ubachs, Dr. J.M.H., Pijnsweg 33,
Heerlen 6419 CJ THE NETHERLANDS
- 129 Wiggins, Jim, Ed. Sports Autographs
Newsletter, P.O. Box 10190, Marina
Del Rey, CA 90295-8864 USA
- 136 Williams, Kelly, 4400 E. Pacific Coast
Hwy, Long Beach, CA 90804 USA
- 132 Winters, Graham, 75 Northgate,
Pontefract, West Yorkshire WF8 1HJ
ENGLAND



The VIIIth SOUTH PACIFIC GAMES will be held in Noumea from 8 to 20 December 1987.

This event, impatiently expected by all the South Pacific athletes takes place every four years.

It will enable to gather on the sports grounds over 3,000 people (athletes, trainers, officials, journalists, organisers).

Sixteen countries and territories will be represented in 10 female disciplines and 18 male disciplines. It's a record!

The Office des Postes et Telecommunications takes part in the organisation and the technical and postal services have given their support.

To mark the event, three stamps will be issued representing the following sports : GOLF, RUGBY, and LONG JUMP, themes selected by the Organising Committee of the South Pacific Games.



Illustrated covers as shown were prepared by the Company who produce Eden Grove Bond paper. They were used with the 1978 Open handcancel on 12th July - point of interest being that the 'Golfer' is the Company's Logo.



by Stuart MacKenzie

While attending the 'Ameripex 86' Exhibition in Chicago, I took the opportunity of visiting the Village of Golf. I managed to find a taxi-cab driver who knew where it was, but was amazed at locals who had never heard of it.

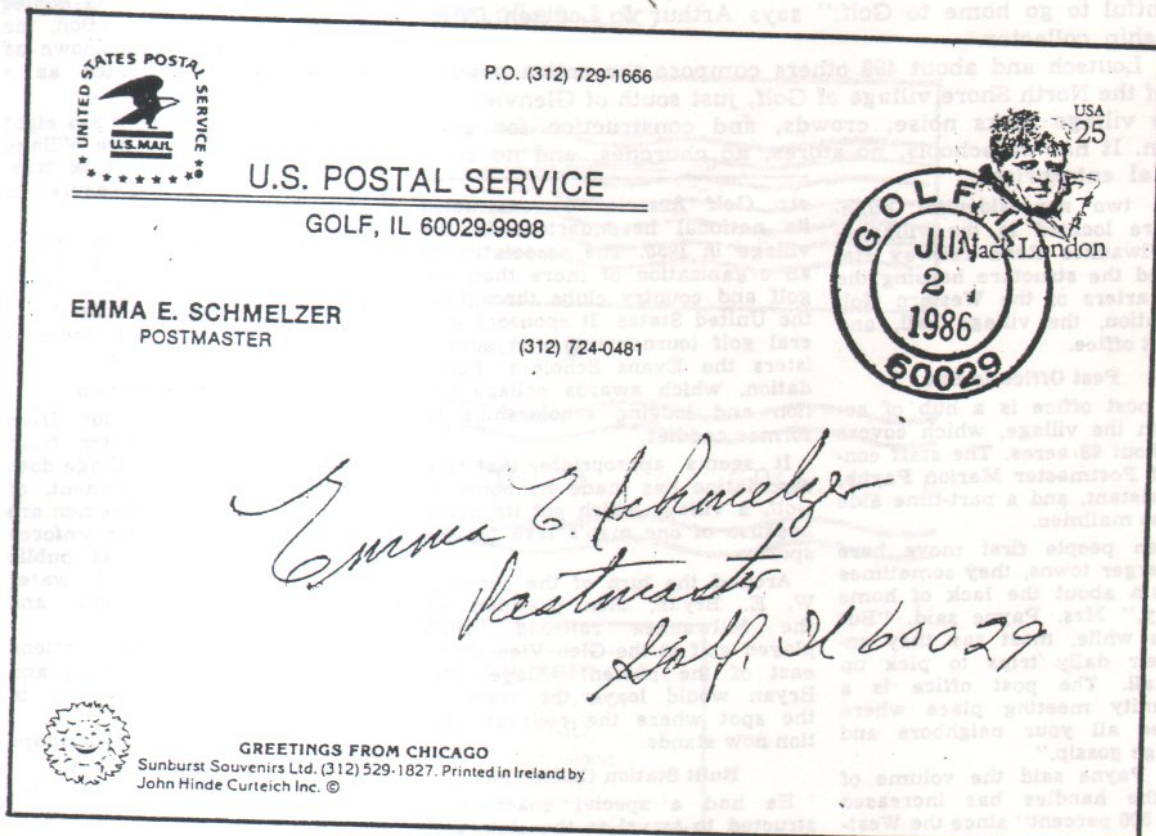
I spent a pleasant hour with the Postmaster and staff at The Western Golf Association, where I was able to pick up some useful information.

The following short article gives an insight to the story of the village, and also the range of postmarks that can be found. This is due to the rubber type used, as they wear out very quickly and frequently need replacing.

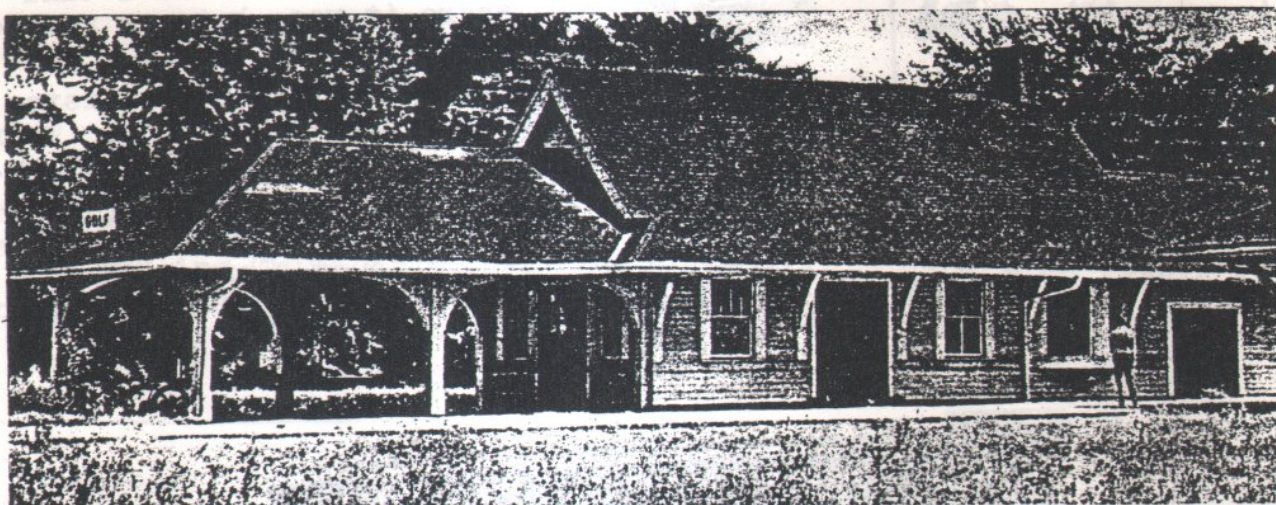
I hope readers will find this of interest.



The Golf Post Office (photo by Charless Hahn)



Emma Schmelzer has been Postmaster for past twenty years.



WHERE THE TRAINS STOP—The Golf station on the Milwaukee Road line was built for W. E. Bryan, railroad president at the turn of the century. He played golf at the nearby Glen View Club.

EVERYONE'S A NEIGHBOR

Golf, North Shore's Smallest Village, Has No Stores, Schools, Churches

By Jerilyn Ellis

"In this era of noise, crowds, and frantic construction, it's delightful to go home to Golf," says Arthur J. Loutsch, Niles Township collector.

Mr. Loutsch and about 499 others compose the entire population of the North Shore village of Golf, just south of Glenview.

The village lacks noise, crowds, and construction for good reason. It has no schools, no stores, no churches, and no commercial enterprises.

Only two nonresidential buildings are located in the village—the Milwaukee Road railway station and the structure housing the headquarters of the Western Golf Association, the village hall, and the post office.

Post Office Is Hub

The post office is a hub of activity in the village, which covers only about 98 acres. The staff consists of Postmaster Marion Payne, her assistant, and a part-time aide—but no mailmen.

"When people first move here from larger towns, they sometimes complain about the lack of home delivery," Mrs. Payne said. "But after a while, most say they enjoy their daily trips to pick up the mail. The post office is a community meeting place where you see all your neighbors and exchange gossip."

Mrs. Payne said the volume of mail she handles has increased "about 500 percent" since the West-

ern Golf Association constructed its national headquarters in the village in 1955. The association is an organization of more than 400 golf and country clubs throughout the United States. It sponsors several golf tournaments and administers the Evans Scholars' Foundation, which awards college tuition and lodging scholarships to former caddies.

It seems appropriate that the association has made its home in Golf, a village which got its name because of one man's love for the sport.

Around the turn of the century, W. E. Bryan, then president of the Milwaukee railroad, often played golf at the Glen View Club, east of the present village. Mr. Bryan would leave the train at the spot where the railroad station now stands.

Built Station Called Golf

He had a special coach constructed to travel to the club, and

eventually built a station on the site where they disembarked. The station was called Golf. As homes were built around the station, the community also became known as Golf. It was incorporated as a village in March, 1928.

The village government has eight elected officials. They are Village Pres. Robert C. Cragg, six trustees, and a clerk. A treasurer is appointed.

A voluntary organization which includes about 60 percent of the village's residents, the Golf Civic Association, dedicates itself to beautifying the area and preserving the village's character.

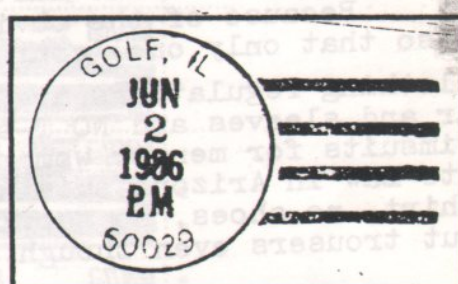
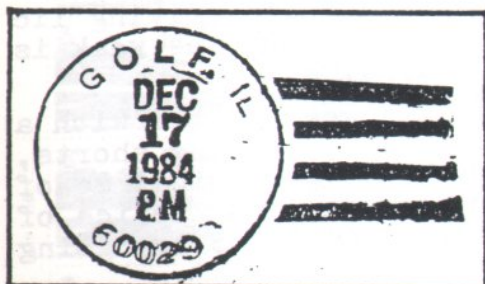
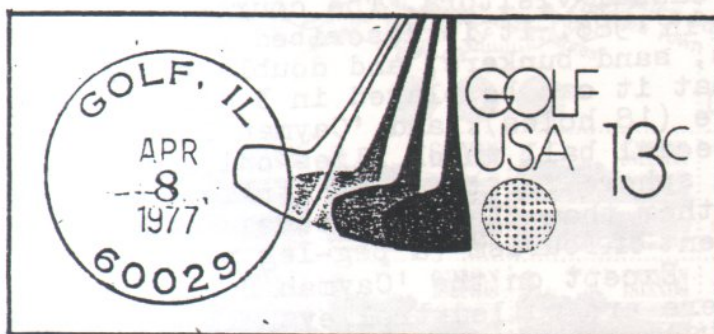
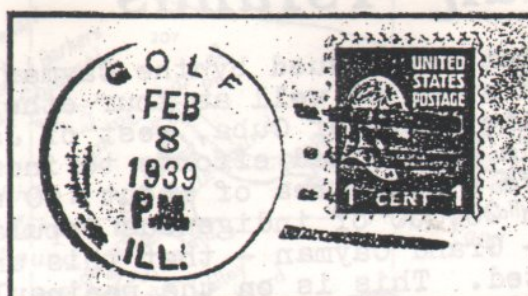
Buys Fire Protection

Golf gets fire protection from Glenview, and buys water from Morton Grove. But the village does maintain a police department, of three members. The policemen are versatile; they not only enforce the law, but also act as public safety officers, checking water mains, street lights, signs, and traffic lights.

The village's children attend Golf School in Morton Grove and Niles Township High School in Skokie.

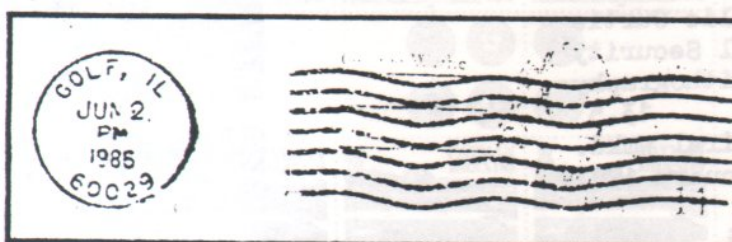
The character of Golf is perhaps best described by Mr. Loutsch:

"This is a friendly, country-like community. Here we have time to be neighborly."



Rubber type cancels

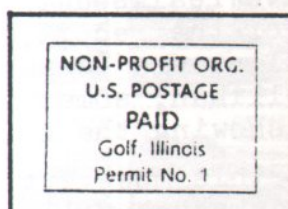
(violet ink)



Steel Machine cancel



Parcel



PAID Mark of the Western Golf Association
Evans Scholars Foundation, Golf, Illinois

Cayman Islands

by Hamish Anderson

The Tourist set issued by the Cayman Islands early last year gave us one more golf stamp as well as four other local sporting activities. The Islands lie south of Cuba, west of Jamaica, and have in the last 20 years or so made determined efforts to increase tourism. The 3 islands in the group have a land area of about 100 square miles supporting considerably less than 20,000 of indigenous population. It is on the largest of the islands - Grand Cayman - that this unique golf course at - Britannia was constructed. This is on the peninsula at the western end and is closely associated with the Hyatt Regency Hotel chain whose guests pay green fees some 20% less than casual visitors. The course designed by Jack Nicklaus was opened for play in 1985. It is described as being 'Scottish' in style with typical mounds, sand bunkers, and double greens! The unique feature of the course is that it can be played in 3 different ways: Championship (9 holes). Executive (18 holes). and 'Cayman Ball' (18 holes). This last is played with a special ball which flies only half the distance - of an ordinary regulation sphere for the same strike. The ball is covered in convex 'dimples' rather than the usual concave and carries a distinctive logo of the Department of Tourism (a peg-leg piratical turtle) as well as that of Britannia. Except on the 'Cayman Ball' layout - golf carts are mandatory; and nowhere are pulled trolleys allowed. A round will cost the visitor about \$50 (US) and no tipping is permitted. One point of interest is that drivers of carts must be over 16 and possess a valid driving licence! Because of the obvious confusion that could arise, the week is split so that only one 'course' is in use at any one time.

The clothing regulations are of interest. Men must wear shirts with a collar and sleeves and NO T-shirts, tank tops, cut offs, running shorts, or swimsuits for men or women. Tennis shoes are allowed. Reminds me of a State Law in Arizona succinctly expressed in the restaurant notice of 'No shirt, no shoes, no service'. I never was brave enough to try going without trousers even though that seemed to pass muster!

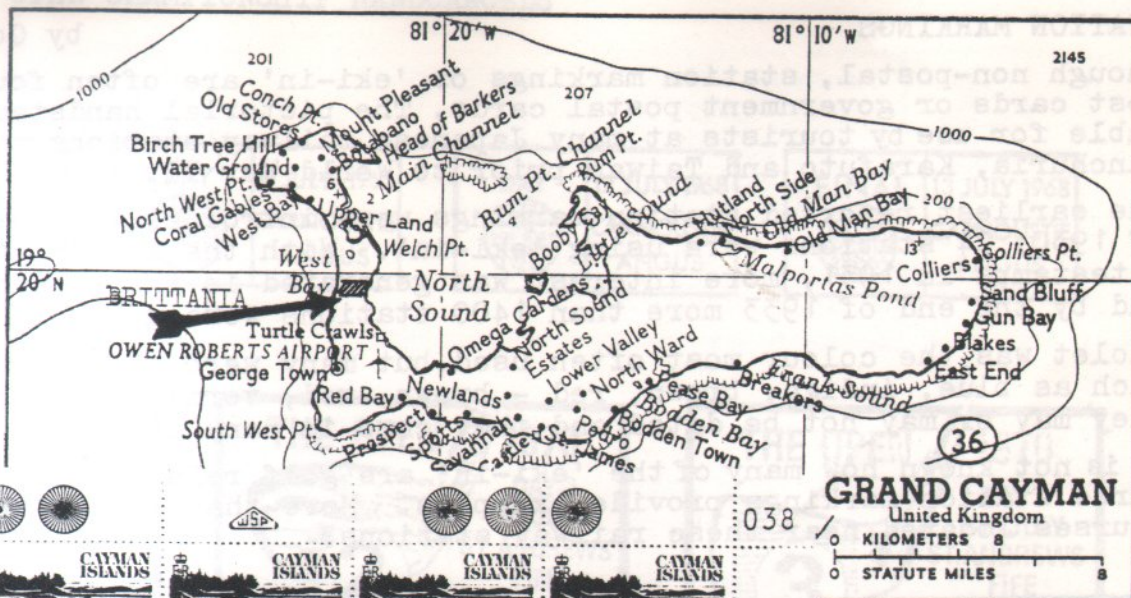
Technical Details

Design : Leslie Curtis
 Printed : Walsall Security
 Process : Lithography
 Perf. : 13.5
 Paper : CA Spiral Wmkd.
 Release : 26 January 1987

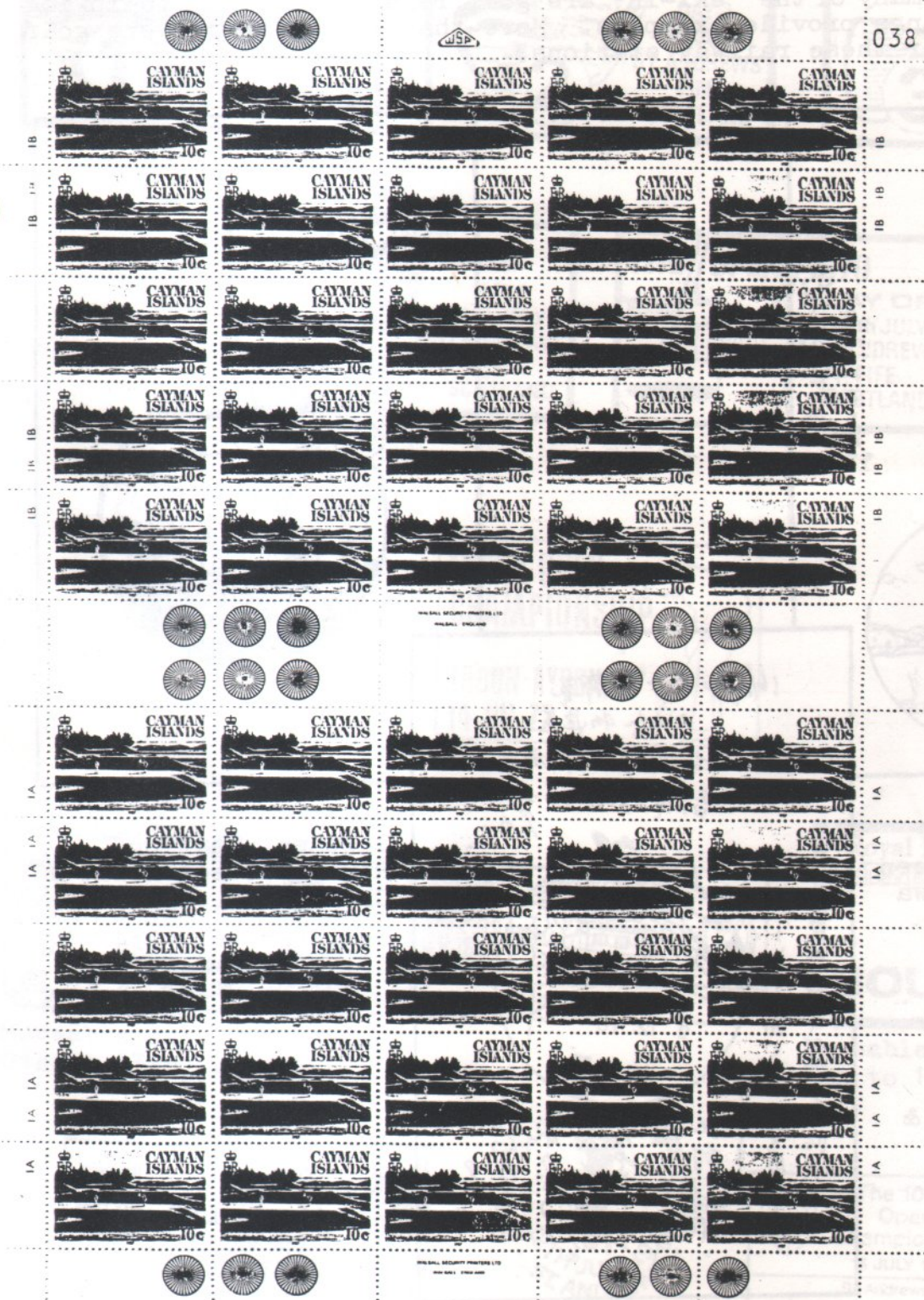


What of the stamp itself? Produced in sheets of 50 as two plates of 25 with a stamp size gutter between it was the cheapest in the set at 10c CI. It is an attractive view over North Sound of the 8th Green of the 9 hole Championship course. It is not an easy green to approach as the merest slice will put your ball in the water unless the bunker is kind and catches the shot. The scorecards for each configuration carry a photograph of the same green but from a slightly different angle. This shows a player going towards the pin carrying his clubs. Those of you who spotted the player with the bag on the stamp may have realised that this green is also used for the 'Cayman Ball' layout. For the record, the gentleman holding the flag is the General Manager of Ellesmere (Cayman) Ltd, the resort developers, and the other is Randy Hollihan, sometime Sales Director. There were of course First Day Covers showing the island maps and tourist logo.

If you manage to make a visit to this most attractive spot, be prepared. As well as having a 'Scottish' links you will have a Scottish Assistant Pro from Muirfield (Peter Downie) and a Scottish Golf Shop Manageress -- (Karen McGill) to whom I am most grateful for much of the information.



Complete Pane of
50 stamps.



STATION MARKINGS

by Cora B. Collins

Though non-postal, station markings or 'eki-in' are often found on picture post cards or government postal cards. The pictorial handstamps were available for use by tourists at many Japanese railway stations in Japan, Korea, Manchuria, Karafuto and Taiwan prior to World War II.

The earliest reported station markings were introduced in 1923. By the end of 1930, 24 stations were using 'eki-in'. With the introduction of scenic datestamps in 1931, more interest was generated in the non-postal markings and by the end of 1933 more than 1400 stations were using the handstamps.

Violet was the colour most often used, but many were struck in other colours such as blue, indigo, brown, red - brown, red, vermillion, green or black. They may or may not be dated and they come in many shapes and sizes.

It is not known how many of the 'eki-in' are golf related, but the following three station markings provide examples. More than likely there were golf courses located near these railway stations.



1934年7月17日
洞爺湖駅
上野駅



1934年12月16日
上野駅
葛生駅



1934年12月16日
上野駅

0.44m 物産色

上野駅

葛生駅

上野駅

1934年12月16日
上野駅

上野駅
葛生駅
上野駅
葛生駅
上野駅
葛生駅

上野駅
葛生駅

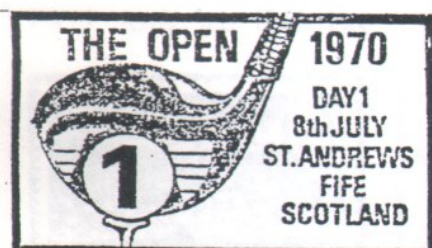
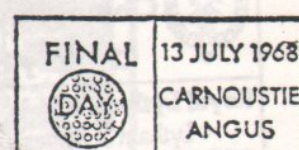
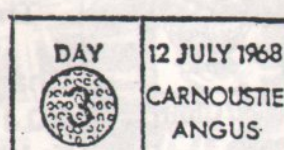
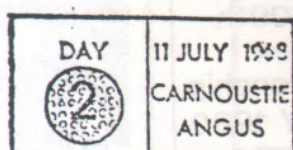
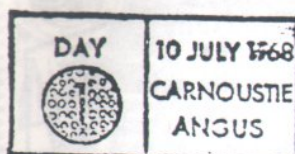
Lake Toya Station,
Hokkaido Route between
Oshamambe & Iwasizawa
July 17, 1934

Gasonshi Station
Route between Abiko &
Chiba
December 16, 1934

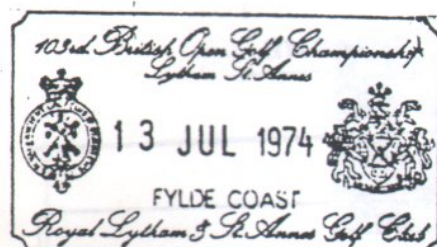
Tashiwa Station
Route between Tokyo &
Maire
December 16, 1934

The BRITISH OPEN CHAMPIONSHIP HANDCANCELS

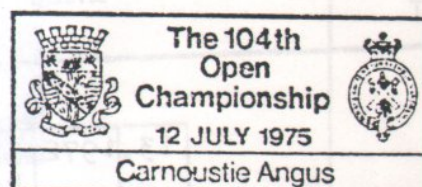
1968 - 1987



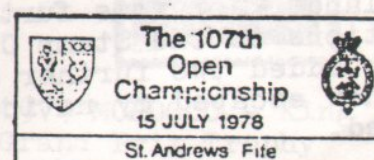
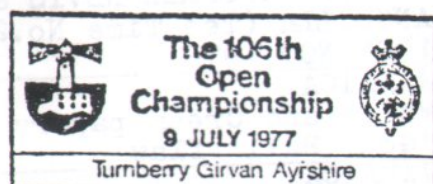
Sunday - Play Off

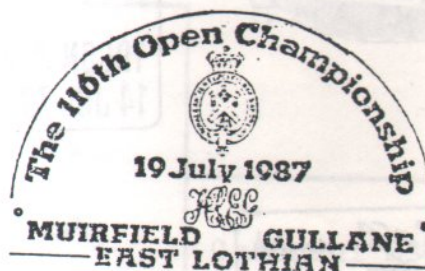
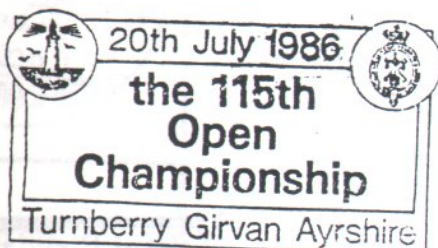
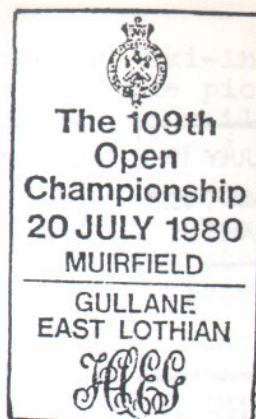


Moveable date used from 8th to 13th July.



Moveable date used from 5th to 10th July.





GOLF STAMP CATALOGUE

I am indebted to Dr. Ubachs of Heerlen, The Netherlands - for some further items and corrections to the Stamp Catalogue. I have also added two further additions which somehow escaped my notice when it was compiled.

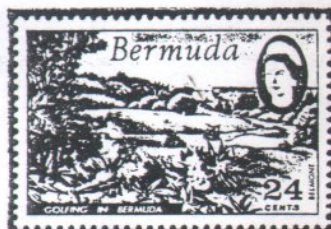
Ed.

13.	1972	SHARJAH Deluxe sheets for all 3 values
	1975	MONTSERRAT Booklet 1975 NOT 1974
22.	1980	St. CHRISTOPHER NEVIS & ANGUILLA (Tee Time No.2) 1980 NOT 1978
34.	1979	JAMAICA White and Cream papers 'Golf Ball' flaw
49.	1986	JAMAICA Gutter pairs



Imperf

1971 RAS AL KHAIMA - Apollo XIV Flight



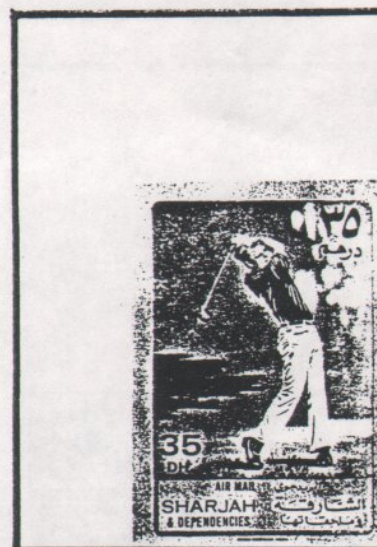
1972 GOLFING in BERMUDA
(also watermark varieties)



1972 SHARJAH - Sports Issue



H. FOURNIER - VITORIA (ESPAÑA)



Imperforate - Airmail

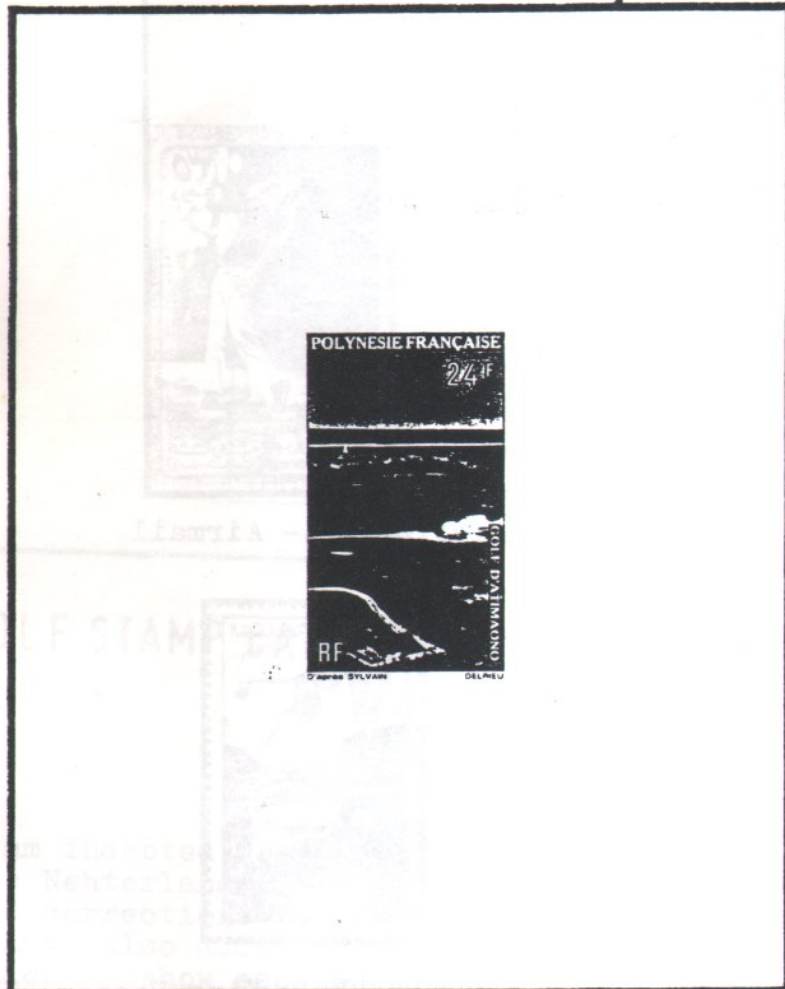


1974 MOROCCO - King Hassan
Grand Prix Trophy
Deluxe sheet

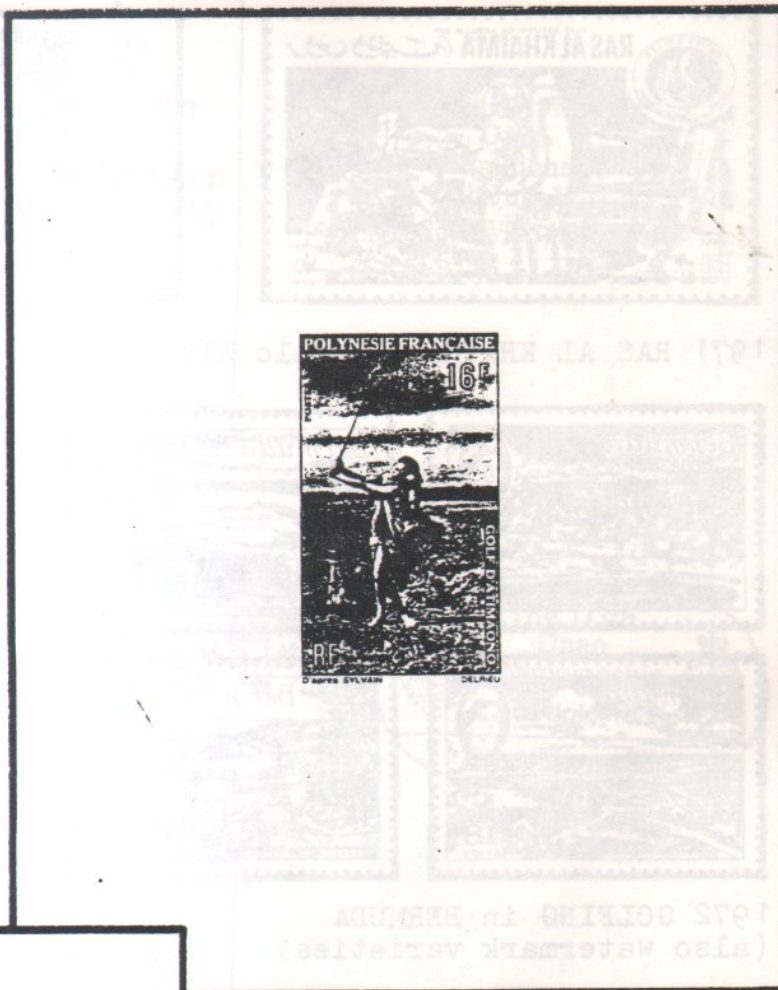
1974 FRENCH POLYNESIA
Atimaono Golf Course, Tahiti



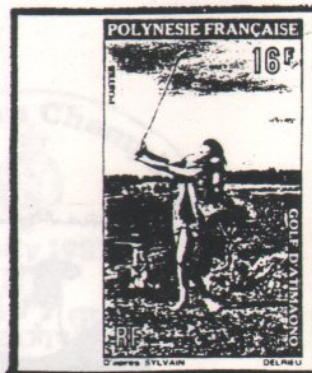
Perforated Issue



24Fr. Deluxe sheet



16Fr. Deluxe sheet



Imperforated Issue