

Tee Time

JOURNAL OF THE INTERNATIONAL PHILATELIC GOLF SOCIETY

1

EDITOR _____ STUART R. MACKENZIE

9



CONTENTS

| | |
|---|-----|
| EDITORIAL - Membership, Auction, Exhibition Awards | 254 |
| POSTACARD CORNER by Hamish Anderson | 255 |
| CHRISTMAS PUZZLE | 255 |
| GOLF SLOGAN POSTMARKS of the UNITED KINGDOM - APPENDIX by Stuart R. MacKenzie | 256 |
| THE GLENEAGLES HOTEL by Stuart R. MacKenzie | 257 |
| GOLF STAMP CATALOGUE by Cora B. Collins | 262 |

9

DECEMBER N° 22

2

| | | |
|--|---|---|
| PRESIDENT Mrs CORA B. COLLINS, P.O. BOX 2183, NORFOLK, VIRGINIA 23501, U.S.A. | | |
| SECRETARY | TREASURER | EDITOR |
| KEVIN J. HADLOCK 447 Skyline Drive ORANGE, CT 06477 U.S.A. | DAVID C. HARMON 4 Whitaker Court WILLIAMSBURG VA 23105 U.S.A. | STUART R. MacKENZIE 'Caberfeidh' Riverside POOLEWE IV22 2LA Ross-shire SCOTLAND |
| AUCTIONEER | | |
| Dr EIRON B.E. MORGAN, 50 Pine Valley, Cwmavon, PORT TALBOT, West Glamorgan, SA12 9NF, WALES. | | |



NEW MEMBERS

- 313 DeWaard, Michael, 250 Cypress Ave., Holland, MI 49423 USA
- 310 Devenis, Keistutis P., 26 Casey Circle, Waltham, MA 02154 USA
- 314 Lundgren, Bo, Upplandsgatan 64, 11328 Stockholm, SWEDEN
- 309 Lundgren, Stan, 919 Santiago Drive, Placentia, CA 92670 USA
- 311 Moore, Michael, Willows, 20 Pipers Close, Cobham, Surrey, KT11 3AU ENGLAND
- 312 Wernheden, Mats, Roslinsvåg 20B, 21755 Malmö, SWEDEN

RESIGNED

Allen, O. Paul
Bergstrom, Hans
Current, Tom
Stoddart, Clyde B.
Wootton, Donald L.

DROPPED

| | |
|------------------------|-----------------------|
| Anderson, R. Lee | Lebiedz, Ed |
| Castillon, Jose | Liljegrahn, Lars-Eric |
| DeMonte, John R. | Lubin, Michael A. |
| Doubleday, Edgar N. | McClure, Jim |
| Enestrom, Goran | Moreno, Jose-Ramon |
| Fredrikson, Harriet | Morris, Peter |
| Griffiths, Marcelle W. | Pommer, Robert W. |
| Hart, Robert S. | Ubachs, J.M.H. |
| Huygen, R.E.F. | Wertheimer, Pierre |
| Jeanneau, Georges | Wiren, Gary |
| Jones, A. D. | |

AUCTION

Enclosed with this issue of TEE TIME is a big Christmas Auction with many interesting items to study during the Festive period. Members are reminded that Regulations about the Postal Auction can be found on Page - 231 of TEE TIME Issue No 20. A bid sheet is enclosed with the Auction list and should be sent to the Auctioneer Dr Eiron Morgan at the address shown on the bid sheet.

CLOSING DATE OF SALE _____ FEBRUARY 15 1993

LOTS for the next sale are welcome and should be sent direct to Dr Morgan NOW.

EXHIBITION AWARDS

Although I have not had Official conformation I have heard from Cora Collins that - TEE TIME was awarded a Bronze medal at the recent Philatelic Literature Exhibition in New York.

I have also heard from Franceska Rapkin, U.K. Commissioner, that our entry for Olyimpex '92 in Barcelona did not arrive. This entry was sent well in advance and now looks like it was either lost in the post or held up by Customs.

Franceska told me that judging arrangements were a mess and that entries could have been taken by her in plenty of time!



CUSTOM IMPRESSIONS

P.O. BOX 2286
La Grange, IL 60525-8386



Golf on Stamps Album Pages

Complete through 1992 - 8 1/2 x 11" punched for 3-ring binder.

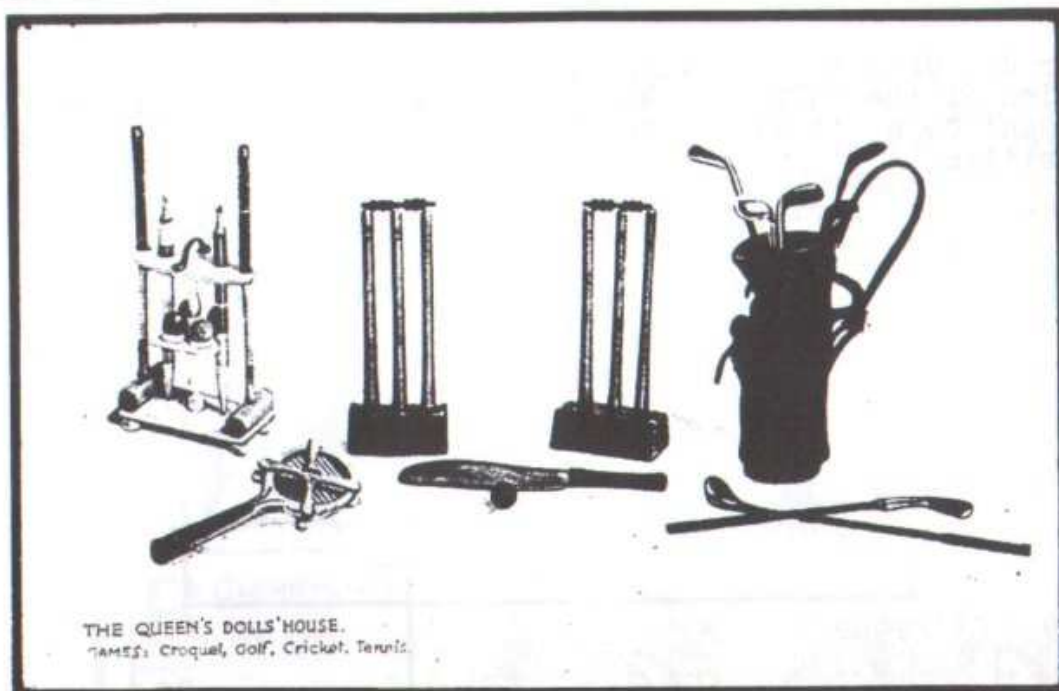
Price \$19.00 - Shipping U.S. \$3.00, Canada \$5.00, All others \$7.00

Also available K-Line Albums - Olympics - Scouting etc. Write for list.

All Foreign Orders MUST BE PAID with International Money Order or check payable on a U.S. BANK.

POSTCARD CORNER

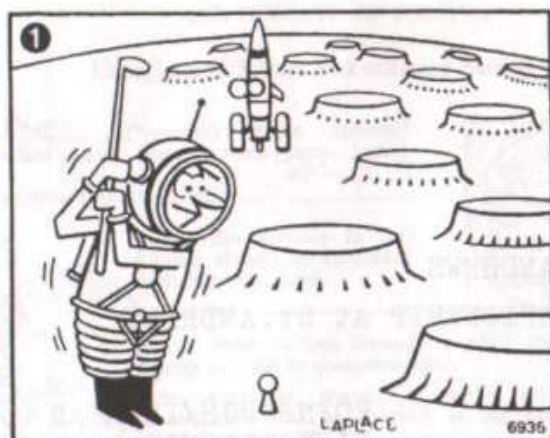
Hamish Anderson



On display in Windsor Castle is the Queen's Dolls' House made as a gift for Queen Mary (1867-1953) in the 1920s. The scale was an inch to a foot and everything in it was a proper working miniature of the real thing. The books in the Library were leather bound and many personally written and illustrated by famous authors such as Rudyard Kipling. An army of craftsmen included famous golf professionals such as Ben Sayers and C. Gibson who made the clubs and bag shown on this Tuck's Post Card of 1924. The leather bag is about 2.5 inches high and the clubs average 3.5 inches.

CHRISTMAS PUZZLE

FIND 8 ERRORS



GOLF SLOGAN POSTMARKS of the UNITED KINGDOM appendix

by Stuart R. MacKenzie

Our member Jim Gray of Droitwich has sent me an unrecorded type slogan cancellation of the INTERNATIONAL GOLF SHOW '86. It shows the LONDON IS M.L.O. and Code '1' at the foot. It has also been used in the Transposed position.

I have taken the opportunity of renumbering these cancellations, being the end of the article - this will be noted as No. G98T



G98T

INTERNATIONAL GOLF SHOW '86

Feb 5/8 Barbican Centre, London

No. Dates Showing Period of Use Office

1986 January 22 to February 4

Used at London Mount Pleasant

G97 Used in Standard Position at

LONDON IS M.L.O./GG ☐

G98T Used in Transposed Position at

LONDON IS M.L.O./1 ☐

G99 Used in Standard Position at

LONDON E.C./S.1. ☐



G100 (Formerly G99)

It should be noted that this slogan was only used in RED.

NORTH EAST FIFE "Par Excellence" 1990 ST. ANDREWS

Note: Used to publicize the OPEN CHAMPIONSHIP at St. ANDREWS

1990 May 1 to July 21

G100 Used in Standard Position at

EDINBURGH/LOTHIAN ☐

(Cancellations all struck in red ink)

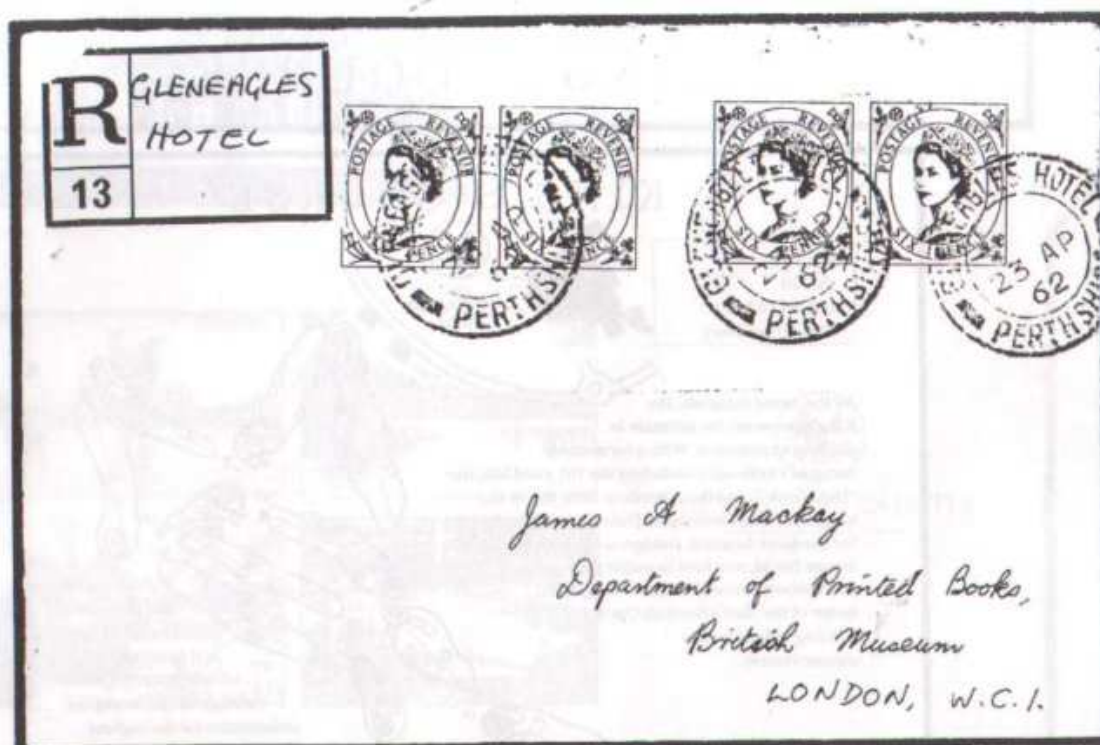
FIFE BORDERS

THE GLENEAGLES HOTEL

First opened in 1924 by the Caledonian Railway Company, Gleneagles Hotel has become World famous as a golfing centre. Its Kings, Queens, Princess and very shortly to open 'The Monarch' Championship Course, designed by Jack Nicklaus, are situated in some of the finest scenery that Scotland can offer.

A Post Office opened at the Hotel on June 1st, 1924 to cater for the needs of the residents and golfers at Gleneagles. It operates as a seasonal Post Office and is a sub-office of Auchterarder, the nearest post town.

The first post mark which is still in use to this day is a double circle type datestamp with solid side arcs. Latterly a single circle type datestamp was issued to the Office for counter work.



| CERTIFICATE OF POSTING | |
|---|--|
| Unregistered letters and ordinary parcels only | |
| <p>ONE (Number) items entered* overleaf have been posted here today.</p> <p>Accepting Officer's Initials.....</p> <p>copy the address in full e items should be presented which they are listed.</p> <p>In the event of loss, damage or delay, this certificate will confer no title to compensation.</p> <p>Any items in respect of which this certificate is issued will not be checked in the post, or afforded special treatment.</p> | |

1962 Env. Registered to London showing the double circle type datestamp GLENEAGLES HOTEL and plain Registered label with Ms endorsement.

1975 Certificate of Posting and both stamps cancelled with the single circle type - GLENEAGLES HOTEL/PERTHSHIRE datestamp.

HOME OF THE BELL'S SCOTTISH OPEN



THE
GLENEAGLES HOTEL
GOLF COURSES

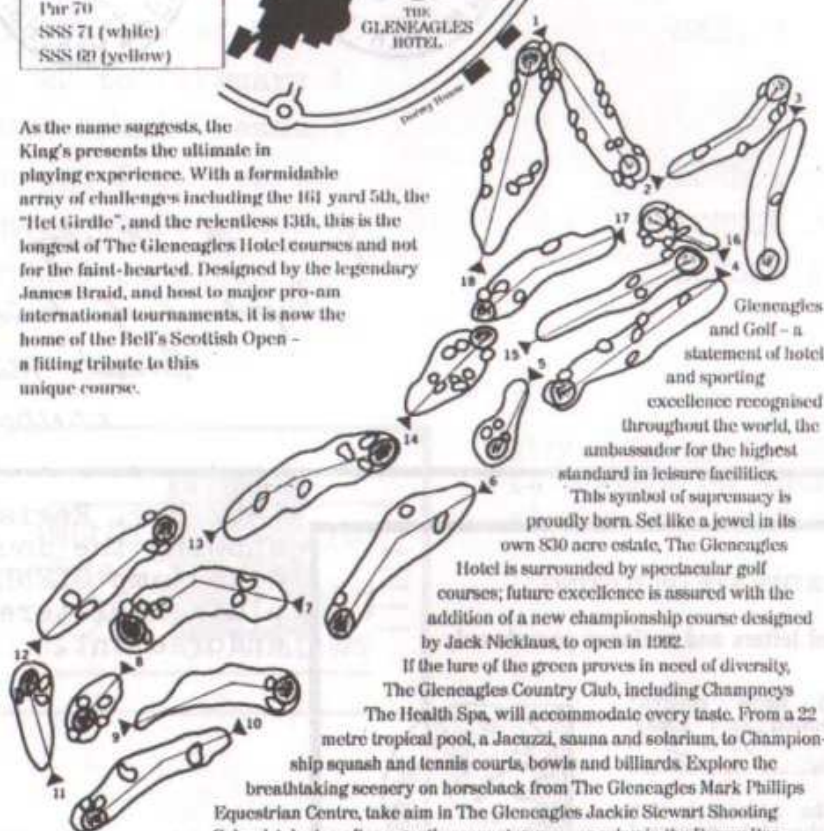


KING'S COURSE

6471 yds
Par 70
SSS 71 (white)
SSS 69 (yellow)



As the name suggests, the King's presents the ultimate in playing experience. With a formidable array of challenges including the 161 yard 5th, the "Het Girdle", and the relentless 13th, this is the longest of The Gleneagles Hotel courses and not for the faint-hearted. Designed by the legendary James Braid, and host to major pro-am international tournaments, it is now the home of the Bell's Scottish Open - a fitting tribute to this unique course.



Gleneagles and Golf - a statement of hotel and sporting excellence recognised throughout the world, the ambassador for the highest standard in leisure facilities.

This symbol of supremacy is proudly born. Set like a jewel in its own 800 acre estate, The Gleneagles Hotel is surrounded by spectacular golf courses; future excellence is assured with the addition of a new championship course designed by Jack Nicklaus, to open in 1992.

If the lure of the green proves in need of diversity, The Gleneagles Country Club, including Champneys The Health Spa, will accommodate every taste. From a 22 metre tropical pool, a Jacuzzi, sauna and solarium, to Championship squash and tennis courts, bowls and billiards. Explore the breathtaking scenery on horseback from The Gleneagles Mark Phillips Equestrian Centre, take aim in The Gleneagles Jackie Stewart Shooting School, take tea after a gentle croquet game - or relax in the Dornay Bar.

A world where sport is king - Gleneagles is testament to those golfing princes - Nicklaus, Haggen, Cotton, Palmer, Player and Ballesteros. They have all been honoured here.

Your stay will be no exception.

All enquiries to:
Golf Office
The Gleneagles Hotel
Auchtermurder
Perthshire Scotland PH13 1NF
Telephone 0764-62231
Telex 76105 Fax 0764-62334



Produced with the compliments of Bell's Scotch Whisky, sponsors of the Bell's Scottish Open.

Gleneagles and the Eagle device are service and trade marks of Gleneagles Hotels PLC.

The New Letter Card replacing the previous design (see THE TIME issue March No. 15 1991)



THE GLENEAGLES HOTEL



THE GLENEAGLES HOTEL

For Reservations: Perthshire Scotland PH10 1SL
Telephone: 01463 228111 Telex: 2080 PGL GLE

Sender



Gleneagles, and the Eagle device are written and trade marks of Gleneagles Hotels Ltd

The Gleneagles Hotel was built to be the last word in luxury. When the hotel opened in 1924 the newspapers described it as "The Scottish Palace in the Glens: The Playground of the Gods." Continual monitoring of standards and updating of facilities has made sure that the same can be said of Gleneagles today.



16th Lusk

*Stanley Bank
Dalry*

1927. Printed Trade Letter card for Rowans Gleneagles shop. It shows information about their 'Great Half Price Offer' at Rowans to be held at the Buchanan Street shop.

The flap shows Archie Thomson, Professional at Rowans and his charges for lessons.

Art work is by Douglas Anderson.



One of the Rowan Kinks in Gleneagles Hotel

Half Price Offer
of
ROWANS
GLENEAGLES
STOCK
Commences Monday
24th January
at

ROWANS
Buchanan Street, Glasgow

Great Half Price Offer at Rowans

As Rowans will open the new season at Gleneagles with an entirely fresh selection of Goods, they have transferred their world-famous stock from Gleneagles Hotel to Buchanan Street, where they will sell it at Half Price next week, commencing Monday, 24th January, at 9 a.m.

The following are but a few of the many garments to be sold at Half Price

| | | | |
|-----------------------------|---------------------|--|-------------------------|
| Men's Pullovers and Jackets | | Ladies' Jumper Suits in Tweed | |
| USUAL PRICES, - | 21/- 30/- 42/- 50/- | USUAL PRICES, - | from 7½/- to 12 Guineas |
| Half Prices, - | 10/6 15/- 21/- 25/- | Half Prices, - | from 37/6 to 6 Guineas |
| Men's Knicker Stockings | | Ladies' Jumper Suits in Wilton and Crin de Chine | |
| USUAL PRICES, - | 10/6 16/6 21/- 25/- | USUAL PRICES, - | from 9 to 12 Guineas |
| Half Prices, - | 5/3 8/3 10/6 12/6 | Half Prices, - | from 4½ to 6 Guineas |
| Ladies' Jumpers | | Ladies' Stockinette Dresses | |
| USUAL PRICES, - | from 21/- to 50/- | USUAL PRICES, - | from 50/- to 11 Guineas |
| Half Prices, - | from 10/6 to 25/- | Half Prices, - | from 25/- to 5½ Guineas |
| Ladies' Sports Stockings | | Ladies' Sports Stockings | |
| USUAL PRICES, - | from 10/6 to 15/6 | USUAL PRICES, - | from 10/6 to 15/6 |
| Half Prices, - | | Half Prices, - | |
| from 5/3 to 7/6 | | from 5/3 to 7/6 | |



*Now is the time
to brush up your
Golf before the
season starts*

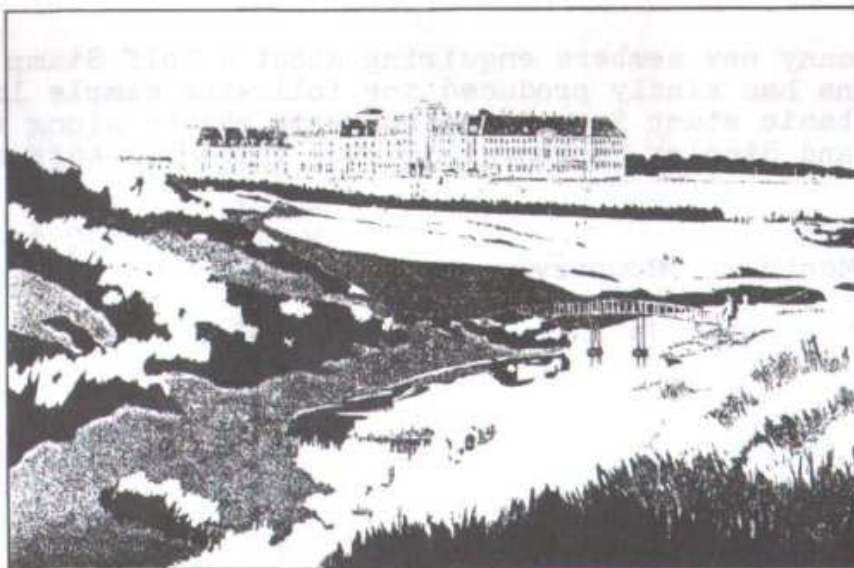
A Lesson of two
from Archie
Thomson, the Rowan
Professional, will do
you a world of good
2/- per lesson

During January and
February you can have
a special course of six
lessons at the
reduced price of 17/6
The usual charge is 21/-



Terms are Strictly Cash.

We regret that we are unable to send Goods on Approval



LMS GLENEAGLES HOTEL
PERTHSHIRE
BY NORMAN WILKINSON.



Modern Post Card showing a Railway Poster for Gleneagles Hotel by the Artist Norman Wilkinson.

Naming of golf holes is a very Scottish trait, and post cards showing them are very collectable.

Holes on the King's Course have some fascinating names which I will have to translate at some later date.

The Postcards illustrated here are no doubt part of a series. It gives one a nice task to try and complete the full eighteen holes.



Driving for the Het Girdle, Gleneagles Golf Course



Putting at Heich o Fash, Gleneagles Golf Course

- | | |
|-----------------|--------------------|
| 1 Dun Whinny | 10 Canty Lye |
| 2 East Neuk | 11 Deil's Creel |
| 3 Silver Tassie | 12 Tappit Hen |
| 4 Broomy Law | 13 Braid's Brawest |
| 5 Het Girdle | 14 Denty Den |
| 6 Blink Bonnie | 15 Howe o' Hope |
| 7 Kittle Kink | 16 Wee Bogle |
| 8 Whaup's Nest | 17 Warslin' Lea |
| 9 Heich o'Fash | 18 King's Hame |

GOLF STAMP CATALOGUE

Due to so many new members enquiring about a Golf Stamp listing, Cora Collins has kindly produced the following simple list. It shows the basic stamp issued and souvenir sheets along with both the Scott and Stanley Gibbons catalogue numbers, years and dates of issue.

| Year | Day | Month | Country | Scott # | SG # |
|------|-----|-----------|--------------------|-----------------------|-----------|
| 1953 | 20 | November | Japan | 592, 593a | 719, 721 |
| 1957 | 24 | January | Dominican Republic | C99, SS* | 675-676 |
| | 8 | February | Same, overprinted | CB3, SS* | 686-687 |
| 1958 | 15 | March | French West Africa | C27, C27a | 103-104 |
| 1959 | 10 | September | Dominican Republic | CB18, SS* | 791, SS* |
| 1962 | 18 | January | Cape Verde | 325 | 389 |
| | 1 | September | France | 1027 | 1550 |
| 1963 | 12 | December | Nicaragua | C535 | 1497 |
| 1967 | 29 | December | Montserrat | 192 | 193 |
| 1968 | 20 | August | Bahamas | 272 | 315 |
| 1969 | 7 | July | Cook Islands | 263, 263a | 303-304 |
| 1970 | 30 | November | Montserrat | 251, 251a | 262, 263a |
| 1971 | 8 | September | French Polynesia | C75, C77a | 138, SS* |
| | 1 | November | Bermuda | 284-287 | 279-282 |
| | | | Ras al Khaima | M539** | |
| 1972 | | | Sharjah | M755, 760** | |
| 1973 | 25 | October | Mali | C200 | |
| 1974 | 8 | February | Morocco | 310 | 382 |
| | 27 | February | French Polynesia | 275-276 | 177-178 |
| | 24 | July | Australia | 592 | 573 |
| | 24 | October | Dominican Republic | 729-730, C222-C223 | 1202-1205 |
| | 16 | December | Norfolk Island*** | 181-184*** | |
| | 16 | December | Souvenir Sheet | 184a | |
| 1975 | 3 | March | Montserrat Bklt | 322a | |
| | 26 | June | Ireland | 371-372 | 373-374 |
| | 31 | July | St. Vincent | 431 | 452 |
| | 18 | August | Norfolk Island | 185-186*** | |
| | 11 | September | Ecuador | 922 | 1591 |
| | 1 | November | St. Kitts-Nevis | 308-311 | 342-345 |
| 1976 | 18 | February | Gambia | 332-334 | 346-348 |
| | 25 | February | Grenada | 704 | 773 |
| | 2 | December | South Africa | 459, 459a | 396-397 |
| 1977 | 22 | June | Indonesia | 1002 | 1477 |
| 1978 | 22 | February | Norfolk Island | 225-228*** | |
| | 28 | February | Jersey | 183-186 | 183-186 |
| | 22 | August | Norfolk Island | 231-234*** | |
| | 8 | September | St. Kitts-Nevis | 364 | 401 |
| 1979 | 3 | June | Tunisia | 738 | 925 |
| | 4 | October | South Africa | 525, 528a | 466, 470 |
| | 2 | November | Grenada | 954 | 1029 |
| | 24 | November | Greece | 1325 | 1487 |
| | 26 | November | Jamaica | 466 | 462 |
| 1980 | 12 | February | Christmas Island | 93-94 | 120-121 |
| | 3 | March | St. Kitts-Nevis | 04 | 04 |
| | 28 | April | Luxembourg | 643 | 1048 |
| | 23 | June | St. Kitts o'prt | 32 | 36 |
| | 23 | June | Same--official | 05 | 05 |
| | 23 | June | Nevis o'prt | 107 | 44 |
| | 30 | July | Same--official | 05 | 05 |

| | | | | | |
|------|----|-----------|--------------------|-----------|--------------|
| | 18 | October | France | 1714 | 2377 |
| | 6 | December | Bophuthatswana | 64-65 | 64-65 |
| | 9 | December | Colombia | C695 | 1544 |
| 1981 | 25 | August | Singapore | 375 | 404 |
| | 22 | September | United States | 1932-1933 | 1906-1907 |
| 1983 | 14 | June | Alderney | 1, 11 | A1, A11 |
| | 31 | August | Samoa | 598 | 645 |
| 1984 | 21 | September | Nauru | 288 | 306 |
| | 10 | December | Bhutan | 462 | 590 |
| 1985 | 23 | July | Guernsey | 302 | 315 |
| | 29 | July | Cook Islands | 880, 883 | 1044, 1047 |
| 1986 | 10 | April | Romania (SS) | 3366 | |
| | 19 | May | Jamaica | 626, 628a | 652, 655 |
| | 12 | June | Norfolk Island | 387 | 391 |
| | 30 | September | Christmas Island | 192 | 225 |
| | 31 | October | Korea | 1473 | 1745 |
| | 10 | December | Montserrat | 640 | 711 |
| 1987 | 26 | January | Cayman Islands | 574 | 647 |
| | 8 | April | Cocos Islands | 161 | 164 |
| | 5 | December | New Caledonia | 568 | 819 |
| 1988 | 13 | January | New Caledonia | C214 | 822 |
| | 20 | April | St. Kitts | 228 | 259 |
| | 16 | May | Italy | 1741 | 1996 |
| | 13 | June | United States | 2377 | 2356 |
| | 11 | July | Philippines | 1937 | 2095 |
| 1989 | 7 | February | Tanzania | 495, 497 | 658-659 |
| | 13 | February | Australia | 1112 | 1194 |
| | 21 | March | Jersey | 480 | 470 |
| | 21 | March | Great Britain Bklt | | |
| | 7 | July | Alderney | 41 | A41 |
| | 8 | December | Sri Lanka | 942-943 | 1097-1098 |
| 1990 | 29 | January | Redonda | | |
| | 3 | May | Maldives (SS) | 1410 | 1392 |
| | 3 | May | Jersey (Tourism) | 537, 539a | 522, M/s 525 |
| | 3 | May | Jersey Bklt pane | | |
| | 25 | October | Tonga | | 1109 |
| 1991 | 7 | August | Antigua | | |
| | 14 | August | Iceland | | |
| | 3 | September | Ireland | 839-840 | 814, 815 |
| | 2 | September | Congo | | |
| | 18 | November | India | | 1483 |
| | 25 | November | St. Vincent (SS) | | |
| 1992 | | September | Guyana | | |
| | 5 | November | Ciskie | | |

*No number assigned

**Minkus catalogue

***Golfer on reverse side of peelable backing.

GOLF STAMP CATALOGUE

HOTELS IN CISKEI
HOTELLE IN CISKEI

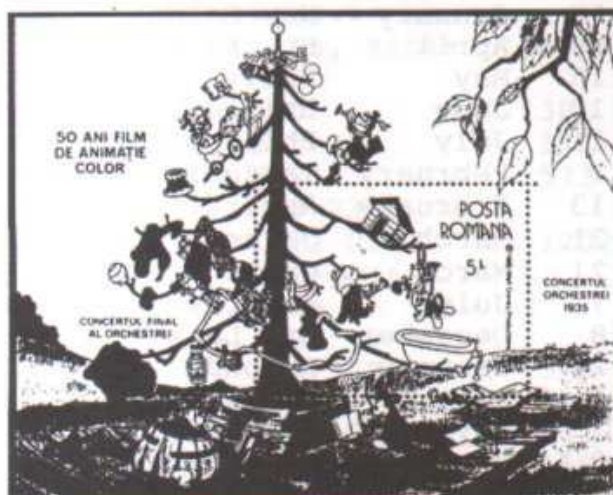
The Fish River Sun Hotel is situated at the mouths of the Great Fish and Old Woman's Rivers. This magnificent resort evokes the romantic world of a Polynesian fishing village. Detailed environmental assessments have resulted in the most imaginative use of this stunning site, while preserving as much of the original landscape and indigenous bush as possible. The hotel has 120 rooms, all en suite, and facilities for up to 280 delegates in a modern convention centre. It hosts a sophisticated casino and a luxury cinema. Its comprehensive recreation facilities include a magnificent Gary Player eight-teen hole golf course, floodlight tennis courts, a squash court and bowling green.

1986 (April 10) ROUMANIA

50th Anniversary of Color Animated Films - Souvenir sheet showing the Disney Characters in Concert Orchestra, 1935

NOTE:

Date of Issue given for this sheet was wrong - not 1991



Titleist®

GOLF'S SYMBOL OF EXCELLENCE