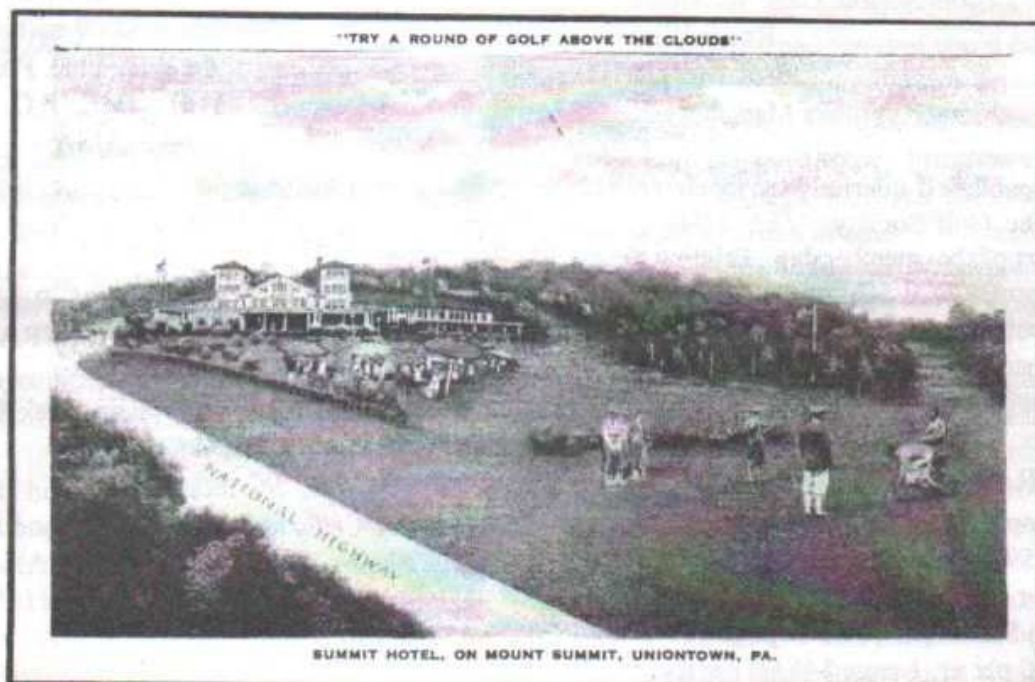
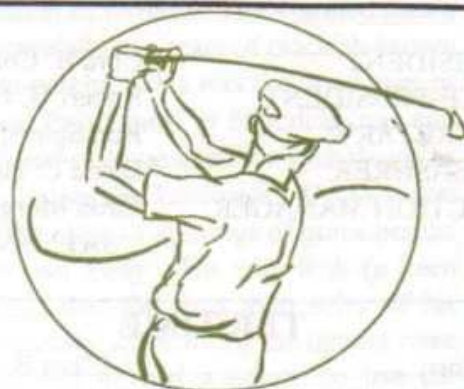


# TEE TIME

*Journal of The International Philatelic Golf Society*  
Volume Seven - Issue 4 - December 2001



## Table of Contents

	Page
IPGS News: Ad rates, Information	2
Front Postcard	2
The Alderney 22P Golf Stamp, Eiron Morgan	3
Notice to Vendors of IPGS Auctions, Eiron Morgan	4
Golf Stamp Issues	5
New Golf Element	9
New Issues	10
Guernsey Cancellations	10
Illegal Issues	10



# INTERNATIONAL PHILATELIC GOLF SOCIETY

PRESIDENT:	Cora B. Collins, P.O. Box 2183, Norfolk, VA 23501-2183 USA
VICE-PRESIDENT:	Robert G. Hilken, 80 S.W. 88, Portland, OR 97225 USA
SECRETARY:	Ron Spiers, 8025 Saddle Run, Powell, OH 43065 USA
TREASURER:	David C. Harmon, 4 Whitaker Ct., Williamsburg, VA 23188 USA
AUCTION MANAGER:	Eiron Morgan, 50 Pine Valley, Cwmavon, Port Talbot, W. Glam. SA12 9NF WALES

## TEE TIME

Editor.....Cora B. Collins

### COLUMNISTS:

#### Cancellations

United States.....Lois Nelson, Gary Schwieger

Australia.....Roger Weik

Great Britain.....Eiron Morgan

Japan.....Yutaka Matsubayashi

*TEE TIME* is published quarterly by the International Philatelic Golf Society. *TEE TIME* is received as a part of the membership. Printing is by Custom Impressions, LaGrange, IL. Address corrections should be sent to *TEE TIME*, P.O. Box 2183, Norfolk, VA 23501-2183 USA (E-mail poststat@juno.com)

## Advertising Rates

Business card reproduced: \$6.00 per issue, \$20.00 per yr; 1/8 page \$9.00 per issue, \$30.00 per yr; 1/4 page \$15.00 per issue, \$50.00 per yr; 1/3 page \$18.00 per issue; \$60.00 per year; 1/2 page \$25.00 per issue, \$80.00 per yr; 1 page \$45.00 per issue, \$150.00 per yr. Camera ready copy needed.

## Membership Dues

Effective January 1, 1996 dues for U.S. and Canadian members are \$12.00 per year, \$22.00 for two years, and \$30.00 for three years. Overseas dues are \$12.00 per year. Mail to: I.P.G.S., P.O. Box 2183, Norfolk, VA 23501 USA. UK (Great Britain) members only may pay 7 pounds in British sterling to: Eiron Morgan 50 Pine Valley, Cwmavon, Port Talbot, W. Glam. SA12 9NF WALES.

Information about membership in IPGS is available from Ron Spiers, 8025 Saddle Run, Powell, OH 43065 USA (Rwspiern@aol.com.)

*Past Issues of TEE TIME* (Numbers 1 through 57) are available at \$2.50 each or \$2.00 each when six or more are ordered at the same time. Postage included. Order from: *TEE TIME*, P.O. Box 2183, Norfolk, VA 23501-2183 USA.

## New Members

562 **Crane, Gordon**, P O Box 405, Rockingham, West Australia 6968 AUSTRALIA

560 **Pederson, Ann**, 4613 Sand Rock Lane, Chantilly, VA 20151 USA

561 **Schmidt, Allan**, 363 G Wildwood Park, Winnipeg, Manitoba R3T OE7 CANADA

## Front Postcard

The picture postcard of the white border era or the 1930s was provided by James Senkewitz. While I have driven past the Summit Hotel on numerous occasions (old Route 40, known as the National Highway) and have a number of cards from the hotel, this is the first one I had seen with golfers on the lawn. Prices for staying at the Summit were especially favorable--\$2.00 for Garage Rooms and \$4.50 and up for a double room with bath. The course is described as the highest, coolest and sportiest golf course in Pennsylvania. See the reverse side of the card on the next page.





Reverse or address side of card

\*\*\*\*\*

## THE ALDERNEY 22P GOLF STAMP

by Eiron Morgan

The set of six golf stamps issued by Alderney show, so it is claimed by the Philatelic Bureau, the evolution and development of golf equipment through the ages. But, on examining the first stamp in the series (22p) it occurred to me that there was a lack of congruence between the date (1901) in conjunction with the illustration of a featherie golf ball, why?

Well, golf historians will be aware that golfers used a wooden ball (e.g., boxwood, boxroot, beech, even ivory) from about 1400. By c 1500 feather-filled leather balls were being used though they were very expensive—costing 4 Scottish shillings each (upwards of £50 or US \$70 these days). It is easy to understand why golf was a rich man's game! Leather covered balls were originally stuffed with "flok" (wool or hair) and they were resilient and more pleasant to play with than the wooden ones which gradually fell from favour. But because of the cost of a good quality featherie, the quest was on for a more cost-effective replacement.

In 1843, Dr. Paterson, of the Divinity Faculty at St. Andrews University, received a large wooden crate sent from Singapore by a missionary son.

The case contained a statue of the Hindu Diety Vishnu—goddess of fertility. The 4-armed figure was packed carefully in a mass of blackish-brown chips of gutta-percha. This was the dried gum of the Malaysian "Palaquium" or Sapodilla tree, and as this exotic material was used for such things as whip handles and various knicknacks, Dr. Paterson ensured that the chips or shavings of gutta-percha were not thrown away. His son, Rob (a keen golfer) realised that the hard gum soles of his boots were scarcely worn whilst the uppers were disintegrating and he had a notion to use the material to make a golf ball. He placed the gutta-percha in very hot water, made it pliable, and then kneaded it into the size of the leather/feather ball he so dearly yearned for—but could not afford.

Thus, from about the mid-1840s the featherie's popularity began to wane. Progress could not be halted, and in 1852 the Royal Burgess Club gave solid balls as prizes instead of featheries. In 1865 the Honourable Company of Edinburgh Golfers broke with tradition when a silver plated replica of the gutta-percha ball was attached to their Silver Club trophy. But, the use of the featherie did not stop abruptly in the mid 1840s—traditions don't die that quickly. In 1859 Edward, Prince of Wales, played golf at Royal Musselburgh with a traditional featherie, not a gutta-percha ball.

The gutta-percha ball developed from a smooth surfaced sphere to a hard-hammered one, and then the moulded gutta appeared in about 1880. In 1900 the Haskell ball was produced—brainchild of Dr. Coburn Haskell of Cleveland. This was a rubber-cored ball encased in gutta-percha. The British gave the new ball a cool reception, but in 1902 Alex Herd won the Open at Hoylake and he used a Haskell ball. This saw the demise of the gutta-percha ball.

So, let me end at the beginning—is it, or is it not, appropriate to link the year 1901 with the use of the featherie golf ball? Would the gutta-percha or Haskell ball be more appropriate? You decide.



## **NOTICE TO VENDORS OF IPGS AUCTIONS**

It would be much appreciated if vendors followed these guidelines regarding the packing and describing of lots sent to the IPGS Auction Manager.

- 1) Only lots of a philatelic golf nature should be sent--only in very exceptional circumstances will this guideline be broken.
- 2) Lots should be sent by 1 May or 1 November for the two auctions.
- 3) Lots are sent at vendor's risk, and vendors' details will be treated with confidentiality.
- 4) Each lot must be sent, packed separately, in a clean envelope or glassine (not e.g., in freezer bags or wrapped in kitchen cling film as these materials do not file effectively).
- 5) There must be a consignment list with a brief and clear description of each lot, and giving the following details where appropriate:

>>Country--in alphabetical order, please

>>Year

>>Scott Number, Condition, e.g., u/m, h/m, used, imperf.--for stamps, s/s, etc.

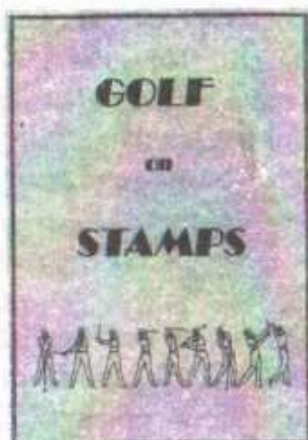
>>FDC, Commem. Cover, env., PPC, PSE etc.

>>Brief description--we are limited to about 250 lines!

>>Minimum bid

As vendors vary a great deal in how they pack and describe lots, it becomes very time-consuming to rearrange and reword descriptions in order to have a uniform presentation. I will very much appreciate your efforts to comply with the above guidelines. If you have any questions or suggestions, then please write.

Dr. Eiron B. E. Morgan  
Auction Manager



### **GOLF ON STAMPS ALBUM PAGES**

**SUPPLEMENT #8-2000 \$47.70 Shipping \$6.50 - Foreign \$10.00**

*Part 1 - and all supplements thru #7 - \$116.30*

Shipping additional to above orders

We now accept VISA, MASTERCARD, DISCOVER/NOVUS and AMERICAN EXPRESS  
Phone: (708) 579-1447 Fax: (708) 579-1473 E-Mail: [album@route66isp.com](mailto:album@route66isp.com)



**CUSTOM IMPRESSIONS**

P.O. BOX 2286  
La Grange, IL 60525-8386

12/1/2001

## GOLF STAMP ISSUES

Year	Day	Month	Country	Scott #	SG #
1995	12	May	Aland	116	98
1983	14	June	Alderney	1, 11	A1, A11
1989	7	July	"	41	A41
2000	28	April	" , SS	152,153a	—
2001	1	August	" , SS	—	—
1991	7	August	Antigua	1456-1463,	1544-1551,
			" , SS	1464-1465	MS 1552
			"	1637	1724
1992		December			
1996	23	September	Ascension	661	—
1998	7	August	"	708	753
1974	24	July	Australia	592	573
1989	13	February	"	1112	1193
1968	20	August	Bahamas	272	315
1994	11	January	Barbados	858	1015
2000	22	May	"	994	—
2000	7	July	"	996-999	—
1971	1	November	Bermuda	284-287	279-282
1993	25	February	"	645	680
1998	24	September	"	759	793
1984	10	December	Bhutan	462	590
1980	6	December	Bophuthatswana	64-65	64-65
1999	7	August	Brunei	550b	—
1995	6	June	Canada	1553-1557	1637-1641
			Panc, Bkt	1557a,1557b	SB191
1962	18	January	Cape Verde	325	389
1987	26	January	Cayman Islands	574	647
1993	30	September	" , Bkt pane	666c,666f	757,SB1
1997	3	December	"	751	854
1998			Central Africa-Sh/4	1220	—
1980	12	February	Christmas Island	93-94	120-121
1986	30	September	"	192	225
1995	11	May	"	369	403
1992	5	November	Ciskei	201	220
1987	8	April	Cocos Islands	161	164
1980	9	December	Colombia	C695	1544
1996	19	September	"	C891	—
1991	2	September	Congo,SS,Triptic*	931,938	1281
1969	7	July	Cook Islands, SS	263, 263a	303-304
1985	29	July	" " , SS [SP]	880, 883	1044, 1047
1992	11	November	Dominica	1494	1632
1974	24	October	Dominican Republic	729-730,C222-C223	1202-1205
1957	24	January	Dominican Republic, SS*	C99	675-676
1957	8	February	" "overprtd, SS*	CB3	686-687
1959	10	September	" "Overprtd	CB18	791
1975	11	September	Ecuador	922	1591
1962	1	September	France	1027	1550
1980	18	October	"	1714	2377
1974	27	February	French Polynesia	275-276	177-178



Year	Day	Month	Country	Scott #	SG #
1971	8	September	French Polynesia, SS	C75, C77a	138,141
1958	15	March	French West Africa, SS	C27, C27a	103-104
1976	18	February	Gambia	332-334	346-348
1992	8	December	"	1306-1312C	MS1408
1994	1	March	Ghana	1660	600c
1989	21	March	Great Britain Bklt	50a	DX10
1994	5	July	" "	1567-1571	1829-1833
1994	26	July	" " Bkt [N.Ire]	1402e	—
1979	24	November	Greece	1325	1487
1976	25	February	Grenada	704	773
1979	2	November	"	954	1029
1984	23	July	Guernsey	302	315
1993	27	July	Guinea, Sh/16	1257B	1561
1998	9	January	" , Sh/9	—	—
?			" -SS, Sh/9	—	—
1992	16	June	Guyana [Genoa], SS	—	—
1993	26	July	Athletes, Sh/9	2676	—
1993	1	September	Olympics, SS	—	—
1993	11	October	Christmas, SS (2)	—	—
1993	6	December	Poster Stamps, Sh/8	2769	—
1993	20	December	Aladdin, Sh/9	2760	—
1994	10	February	Chapin, Sh	—	—
1998	20	November	Poster Stamps, Sh/8	—	—
1990	14	August	Iceland	706	772
1991	18	November	India	1390	1483
1977	22	June	Indonesia	1002	1477
1997	9	September	" 2 sh/margin	1717-1720	2333-2336
			" Bkt-Cover	1720b	—
1975	26	June	Ireland	371-372	373-374
1991	3	September	"	839-840	814-815
1994	18	February	Isle of Man, Bk pane	578, 586a	591, B37
1997	29	May	" " , SS	752-755, 756	—
			" " Bkt panes	752a, 753a, 755a, 756a	B45
1988	16	May	Italy	1741	1996
1979	26	November	Jamaica	466, 468	462, 464
1986	19	May	"	626, 628a	652, 655
1993	16	December	" , SS	792-797, 798	833-838, MS839
1994	18	February	" , SS (ovprt)	799	MS842
1953	20	November	Japan	592, 593a	719, 721
1999	10	September	"	2707	—
1978	28	February	Jersey	183-186	183-186
1989	21	March	" , Bkt pane	480, 480a	470
1990	3	May	Jersey, SS	537, 539a	522, 525
1995	28	February	Kenya	642-645	642-645
1986	31	October	Korea SS	1473	1745
1996	19	August	Liberia	1221	—
1980	28	April	Luxembourg	643	1048
1993	24	June	Malaysia	477-479	502-504
1995	23	December	" , Bkt, pane	564, 573a	SB4

Year	Day	Month	Country	Scott #	SG #
1999	18	November	Malaysia, SS	758-761,761a	-
1990	3	May	Maldiv Island SS	1407	1392
1996	27	May	" " , Sh/6	2152	2481
1993	12	March	Monaco	1854	2118
2000	19	June	"	2164	-
1967	29	December	Montserrat	192	193
1970	30	November	" , SS	251, 251a	262, 263a
1975	3	March	" Bkt	322a	343-346
1986	10	December	"	640	711
1974	8	February	Morocco	310	382
1983	3	September	" , SS	552,554a	644,647
1984	21	September	Nauru	288	306
1999	27	October	Netherlands Antilles SP	B337	-
1980	23	June	Nevis o'prt	107	44
1980	30	July	" Same--official	05	05
1996	14	February	"	950	975
1997	15	July	" , Sh/9	1021	1101-1109
1999			" , SS	1181c	-
2000	10	July	" , SS	1222,1222d	-
1987	5	December	New Caledonia	568	819
1988	13	January	" "	C214	822
1993	24	November	" " , Sheet/13	687	986
1995	24	August	" "	724	1048
1995	22	March	New Zealand	1255-1258	1861-1864
1963	12	December	Nicaragua	C535	1497
1996	27	September	Niger, SS*	898	-
1998	23	July	" , SS	-	-
1974	16	December	Norfolk Island***	181-184***	158-161
			" " , SS	184a	MS162
1975	18	August	" "	185-186***	163-164
1978	22	February	" "	225-228***	203-206
1978	22	August	" "	231-234***	209-212
1984	18	September	" " , SS	346a	MS346
1986	12	June	" "	387	391
1993	15	April	North Korea SS	-	MS3260
1997	10	November	" " , SS	-	-
1995	15	September	Pakistan	836	973
1996	17	June	Palau Sh/20	401	1026
1988	11	July	Philippines	1937	2095
1993	18	June	"	2241c	-
2000	6	October	Portugal, SS	-	-
1972			Ras al Khaima	M540**	-
1990	29	January	Redonda	-	-
1986	10	April	Romania SS	3366	5030
1980	23	June	St. Kitts o'prt	32	36
			" " Same--official	05	05
1988	20	April	" "	225,228	256,259
1975	1	November	St. Kitts-Nevis	308-311	342-345
1978	8	September	" "	364	401



Year	Day	Month	Country	Scott #	SG #
1980	3	March	St. Kitts-Nevis--official	04	04
1975	31	July	St. Vincent	431	452
1991	25	November	" " SS	1560	1812-1819
1996	8	January	St. Vin Grenadines-Sh/9	2250	3214-3222
1997	19	July	" " Sh/9		
1983	29	August	Samoa	598	645
1971		December	Sharjah	M755, 760**	—, —
1981	25	August	Singapore	375	404
1976	2	December	South Africa, SS	459, 459a	396-397
1979	4	October	" " SS	525, 528a	466, 470
1997	4	January	" " SS	956	944
2001	28	February	" "		
1989	8	December	Sri Lanka	942-943	1097-1098
1996	23	August	Sweden	2181	1873
1989	7	February	Tanzania, SS	495, 497	658-659
1996	27	September	" Sh/6	1504	
1989	25	October	Tonga	760	1109
1978	17	January	Trinidad & Tobago	281, 283a	486
1979	3	June	Tunisia	738	925
2000			" , SS		
1999	19	September	Turkey	2738	—
1991	7	October	United Arab Emirates	366	—
1993	16	January	" "	411	405
1993	28	January	" "	409-410	409-410
1993	16	February	" "	417	413
1981	22	September	United States	1932-1933	1906-1907
1988	13	June	" "	2377	2356
1995	20	May	" "	2965	3040
1998	10	September	" "1930s, Sh/15	3185	3509
1996	27	February	Uruguay	1606	—
1996	24	January	Wallis & Futuna	477	674

\*No number assigned

\*\*Minkus catalogue

\*\*\*Golfer on reverse side of peelable backing.

If anyone can fill in any of the missing numbers or dates, I would be glad to hear from you. Countries such as Guyana are particularly difficult to identify. The 1999 edition of Scott Catalogue was used for updating prior lists. Issues of questionable postal validity have been purposely left out. Individuals can collect whatever they wish, however, the Society does not purport to endorse these questionable items and will not promote them in the journal.

\*\*\*\*\*

## SPECIAL THANKS

A special word of thanks to Ron Spiers who added quite a few of the Scott numbers as well as dates of issue. If any of our members from Great Britain can supply the Stanley Gibbons numbers, we would be most grateful. We would like to make the list as complete as possible for the next update we publish. Information on past or upcoming golf issues is always of interest to the editor. Please continue to pass on information relevant to our specialized collection of golf philately.



## NEW GOLF ELEMENT

The spray-on markings added by the postal service at times include an ad for a golf tournament. Two of our members, Ron Spiers and James Senkewitz, have sent photocopies of spray-on markings pertaining to tournaments. One of the spray-on markings was for the UPCI LEUKEMIA GOLF OPEN. This cover was mailed from Duquesne University in Pittsburgh to an Ohio address. It would appear this spray-on was applied at the point of origin, Pittsburgh, PA since a part of the zip code is 152.

### DUQUESNE UNIVERSITY

600 FORBES AVENUE  
PITTSBURGH, PA • 15282

UPCI LEUKEMIA GOLF OPEN 152



A second spray-on is not as readable as the above. It is an ad for the LEMIEUX CELEBRITY TOURNAMENT and was applied at the destination. The rest of the information is not legible. However, through the Internet we were able to find out more about this tournament. The 2001 Mellon Mario Lemieux Celebrity Invitational was held June 7-10 at The Club at Nevillewood, Collier Township in Allegheny County near Pittsburgh. Celebrity players expected to attend in 2001 included Michael Jordan, Dan Marino, John Elway and Charles Barkley. The prior year's event raised more than \$1.2 million for the Mario Lemieux Foundation which funds cancer research.

It is possible that both of these spray-on markings were for the same tournament. Mario Lemieux was a member of the Pittsburgh Penguin Hockey Team. Lemieux was diagnosed with Hodgkin's disease, a form of cancer which attacks the lymph nodes. Hodgkin's disease is one of the forms of cancer for which the Leukemia Society funds research.

The Club at Nevillewood is a private 18-hole course which was founded in 1992. The course architect was Jack Nicklaus.

If anyone can provide more information about the two spray-on markings, we would like to share it with other members of IPGS.

We are also interested in any other spray-on markings which you may have come across on your mail. This is a new aspect of collecting so there is no history which can be researched to answer any of our questions. Send your information to the Editor of *Tee Time*, P O Box 2183, Norfolk, VA 23501-2183.

\*\*\*\*\*

There will be one more free year of dues for those who are in good standing at the end of 2001. A number of members have already paid even though this announcement has been in the December issue for about three years. Those who owe dues at the end of 2002 will receive an envelope with their December 2002 issue.

## NEW ISSUES

### Norfolk Island

The aerogramme of Norfolk Island featuring golf was originally issued on January 27, 1998. It was featured in the June 1998 issue of *TEE TIME*. At the time of issue the aerogramme had a value of 75 cents. It has since been revalued to 80 cents. While we don't have a date on which the aerogramme was revalued, we know it was sometime before September 2000 as they were available at OLYMPHILEX in Sydney.



NORFOLK ISLAND

Norfolk Island has also issued a set of stamps, one of which (\$1.05 value) has a golf course in the background over the girl's left shoulder. The stamp is part of a set of fragrance stamps, and booklet, perfumed with the scent of Jasmine in a newly developed printing technique.



One has to look very closely to determine any distinguishing features of a golf course. Under magnification, it appears there may be bunkers in the distance. We will let you decide whether or not you wish to include this stamp.

We would be glad to hear other ideas as to whether or not a golf course is recognizable. It almost looks like a golf course might be visible on the back cover of the booklet, however, it is not mentioned. If you are interested in looking up this stamp there is a web site:

<http://www.stamps.gov.nf.stamps2001.htm>

Our thanks to Bill Graham and Luis Garcia for bringing this item to our attention.

\*\*\*\*\*

### GUERNSEY CANCELLATIONS

Thanks to Eiron Morgan for sending copies of the two cancellations available on the Alderney issue of stamps which was featured in the September 2001 issue of *TEE TIME*.



\*\*\*\*\*

### ILLEGAL ISSUES

The following appeared in Stamp Magazine, June 2001 and was provided by Eiron Morgan.

"Illegal stamps featuring a range of entertainment and sport stars—including golf phenomenon Tiger Woods—were sold into the Laos market at the end of last year according to the postal administration of the Lao People's Democratic Republic.

The report sent to the Universal Postal Union, said that the stamps were issued on November 16, 2000 and were sold over the Internet. The statement read: 'The postal administration of the Lao PDR never issued these stamps. The false stamps were



issued in violation of the provisions of the Universal Postal Convention and the Letter Post Regulations and Lao PDR regulations'. The stamps featured golf stars Woods, the late Payne Stewart and Arnold Palmer, and 'Great People of the 20th Century'.....

Maria Libera of the World Association for the Development of Philately (W.A.D.P.) has been collecting data on illegal stamps around the world, and says that the Laos issues were seen on the website [www.marlen-stamps.com](http://www.marlen-stamps.com), along with several other illegal issues. When STAMP MAGAZINE looked at the website, the Laos issues appeared to have been removed. The W.A.D.P. is organizing a meeting of international experts in the run up to the Belgica exhibition, in order to clamp down on this growing problem."

#### FALKLAND ISLANDS BOGUS STAMPS

The following was provided by Allen Payne regarding Falkland Islands. He contacted Margery Wharton who writes for the Falkland Islands Philatelic Study Group.

A set of twelve stamps appeared as a miniature sheet called 'Creation of a Great Champion' which showed pictures of Tiger Woods, the golfer. In addition there were two 'sheetlets' with one stamp on each. She writes "No such stamps have been officially issue by the Falkland Islands Post Office. All Falkland Island stamps are printed through the Crown Agents and have the Crown Agents watermark on the paper. More obviously, all Falkland Islands stamps carry the Queen's head or the Royal Cipher on them."

These stamps were labeled 'Westpoint Island'. Ms Wharton describes the island as a small island to the north with one farm and a population of two, neither of which knows anything about these stamps. Cruise ships call on the island for the penguin rookeries and albatross colonies.

These items are merely coloured labels and should be treated as such. They have no postal validity at all. It is believed they emanate from Great Britain and that 1000s have been printed...."

+++++

#### GOLF STAMPS FRANCE & FRENCH COLONIES



*Lucy & Desi Golf Course Scenes on Perf. Sheets  
Single and sheets of 9....also available in frames!!*



*Please inquire.*

*E. Joseph McConnell, Inc.*

*P.O. Box 683 Monroe, N.Y. 10950*

*Fax: 845-782-0347 email: [mcconnell@warwick.net](mailto:mcconnell@warwick.net)*

*Please visit our Website: [EJMcConnell.com](http://EJMcConnell.com)*



# Luis' Stamps

Luis E. Garcia

P. O. Box 606 Mundelein IL 60060

Phone: (847) 949-0114 FAX: (847) 949-0116

e-mail: [luisgarcia2@juno.com](mailto:luisgarcia2@juno.com)

## Merry Christmas

		<u>perf</u>	<u>imperf</u>
Afghanistan	T. Woods sheetlet of 9 - 1 A. Palmer	\$6.00	\$22.50
Afghanistan	Tiger Woods sheetlet of 9	\$6.00	\$22.50
Angola	s/s of 4 Tiger Woods Annika Sorenstam	\$5.90	\$11.80
Angola	Tiger Woods sheetlet of 9	\$6.20	XXX
Angola	Grand Slam sheetlet of 12	\$12.75	\$25.00
Angola	s/s Arnold Palmer	\$4.75	\$9.25
Guinee	Block of 4 - All golfers	\$4.00	\$15.40
Congo	Sheetlet of 6 - 1 Tiger Woods	\$5.25	coming
Laos	Red Shirt - Tiger Woods sh of 9	\$5.75	\$22.50
Mongolia	Children & Sports - sh of 9 - 1 golf	\$4.50	P.O.R.
Kyrgyzstan	Tiger Woods sh of 9 & 3 s/s	\$16.00	\$32.00
Myanmar-Burma	Set of 5 different s/s 10 golfers	\$19.80	\$37.50
Madagascar	Tiger Woods sheetlet of 9	\$9.50	\$35.00
Norfolk Islds	Set of 5 - 1 Golf Course	\$3.65	XXX
Norfolk Islds	Revalued Cover - Golfer on Bunker	\$2.00	
Rwanda	Cowboys Golfers	\$6.60	XXX
Rwanda	Tiger Woods sheetlet of 9	\$15.50	XXX
Somali	9 different s/s - 4 T. Woods	\$19.50	\$35.00
	2 P. Stewart & 3 G. Norman		
Somaliland	sh of 9 - 3 Palmer-Woods-Nicklaus	\$6.50	XXX
Somaliland	sh. Of 9 - Woods-Norman-Stewart	\$7.00	XXX
South Africa	Set of 10 - 1 Ernie Els	\$3.00	XXX
Tadjikistan	Tiger Woods sheetlet of 9	\$7.00	\$35.00
Tchad	Block of 4 - all golfers	\$6.00	\$19.50
Turkmenistan	Tiger Woods - single s/s	\$8.60	\$24.75

10 % Discount on orders over \$ 75.00

VISA and MASTER CHARGE also accepted

Prices subject to change without prior notice

11/15/01